

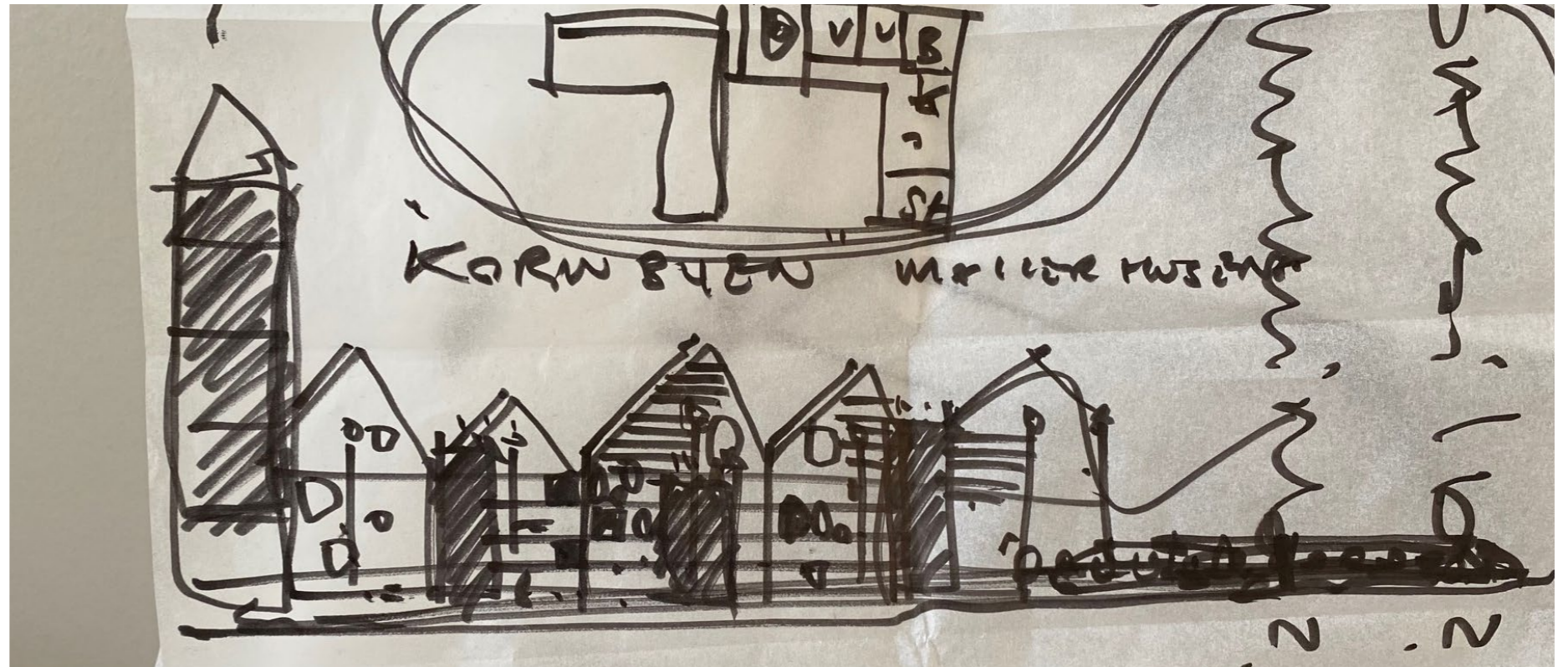
KORNBYEN

Holmskovtoften 1, 8340 Malling
Bygherre Domi Bolig
KAARK - Kenneth Arboe Arkitektur
2021

FORELØBIG - SKITSEPROJEKT

Grundidé - Altangangsbuss med bybuse på toppen

- Kombinationen af altangangsprincippet med individuelle bybuse på toppen
- Depoter monteret på altangange med opholdsarealer ovenpå aktiverer altangangene og skaber variation i facaden



Materialer Udtryk // Træ, Beton & Corten

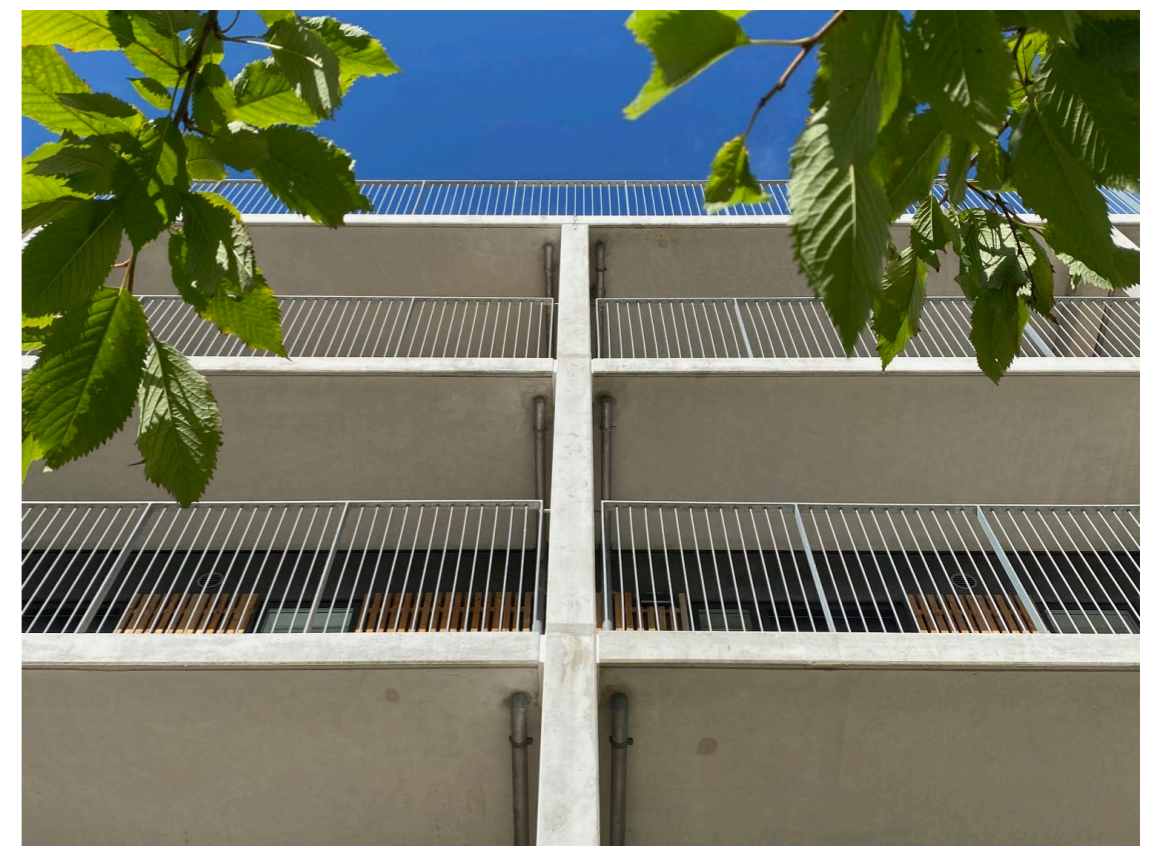
- Kombinationen af træ og beton er lys og venlig.
- Corten monteres på depoter.



Materialer Udtryk // Træ, Beton & Corten

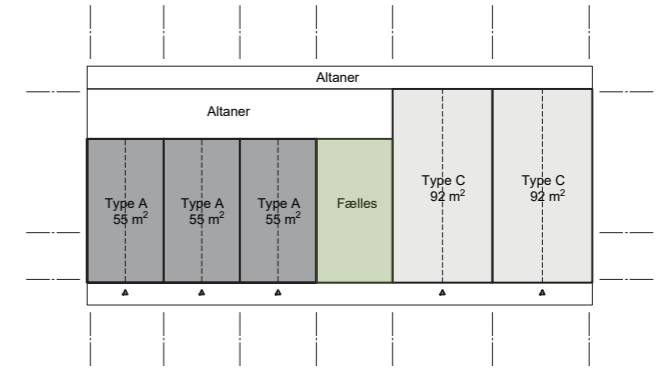
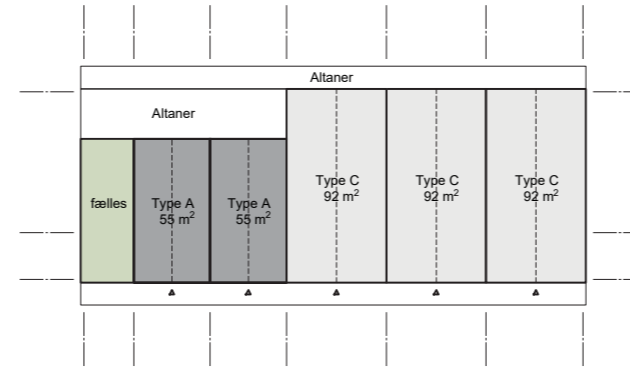
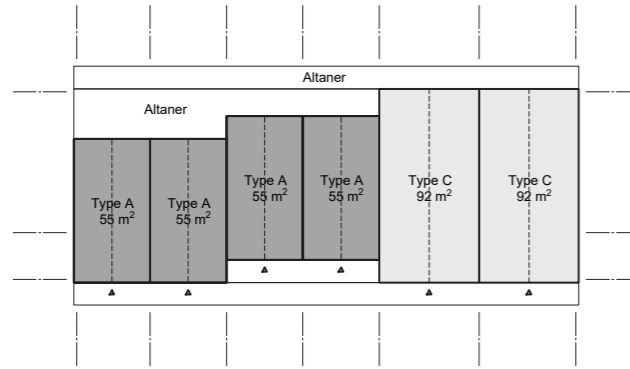
- Kombinationen af træ og beton er lys og venlig.

- Corten monteres på depoter.

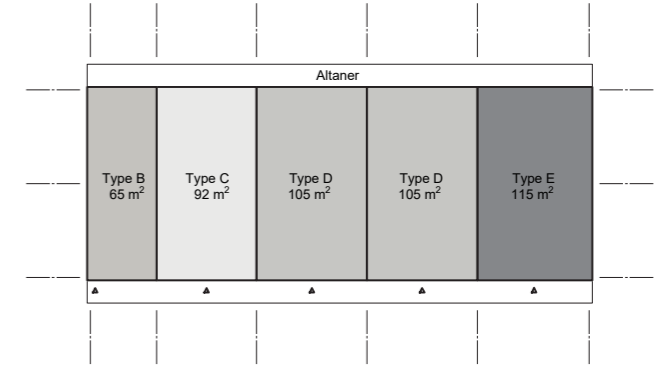
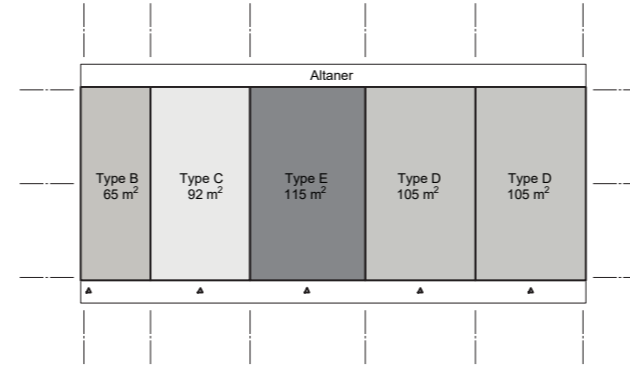
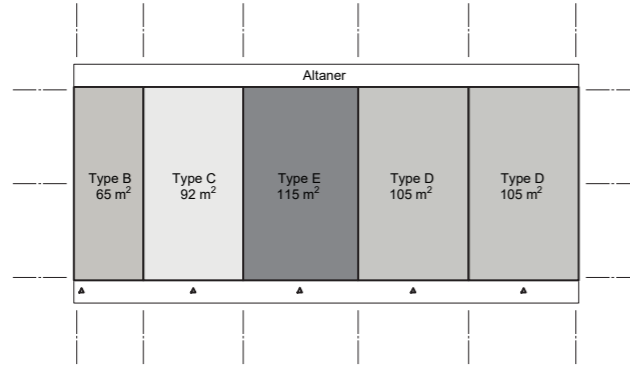




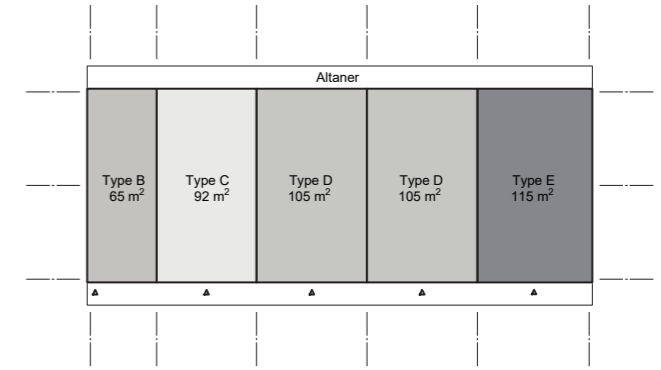
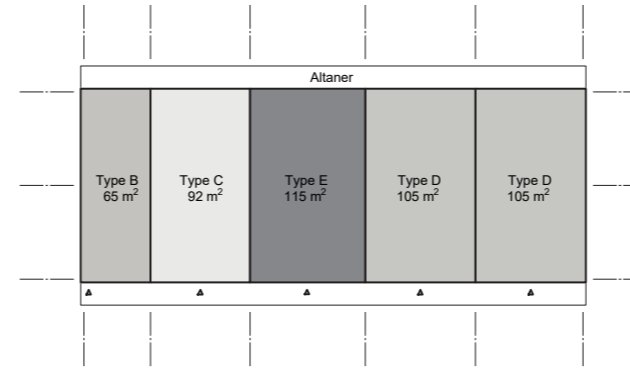
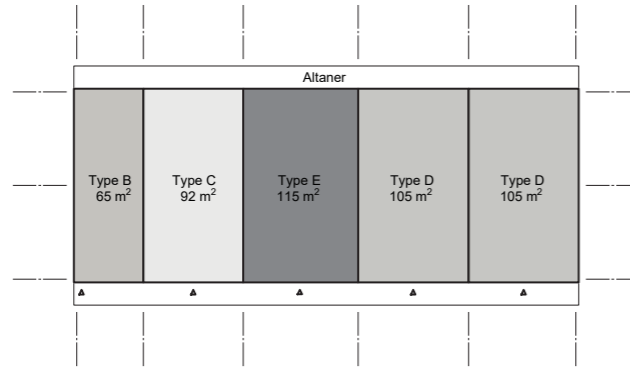
3.sal



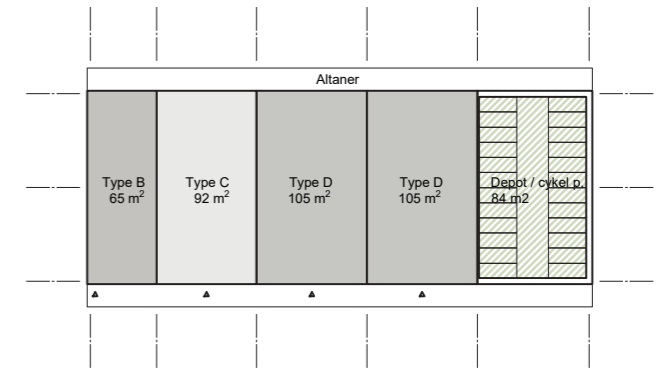
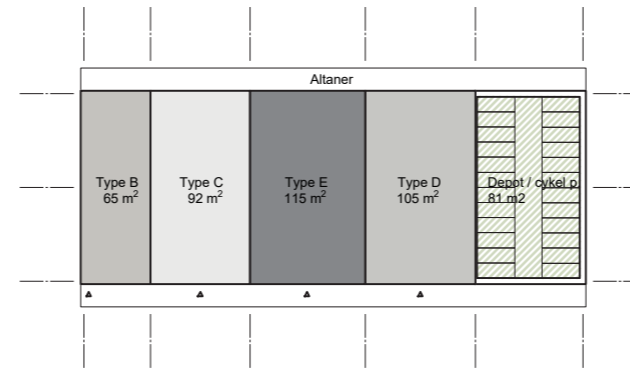
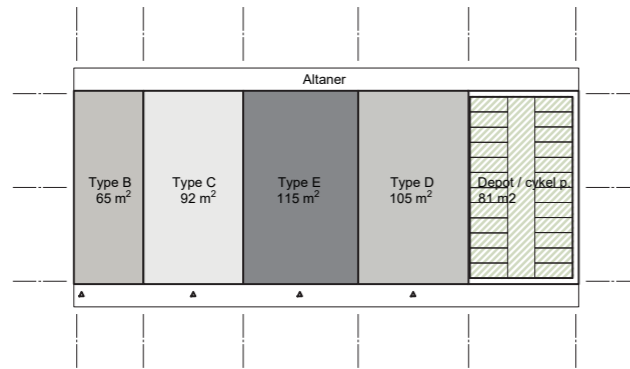
2.sal



1.sal



Stue



BLOK 1

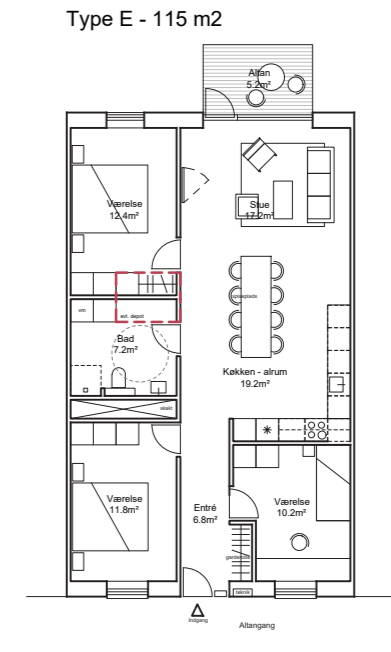
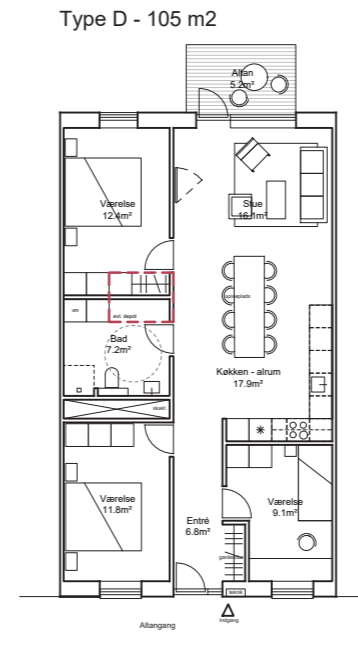
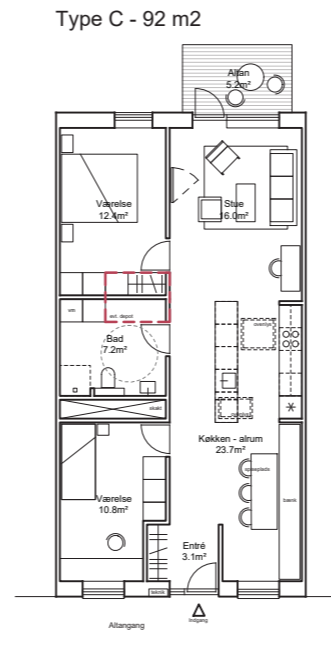
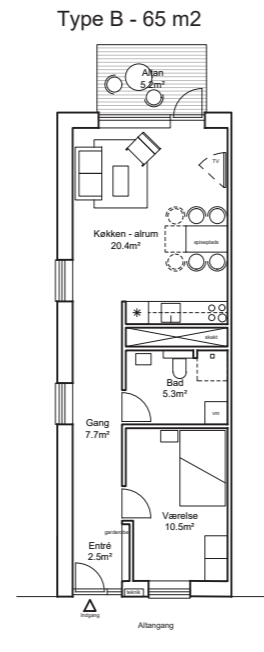
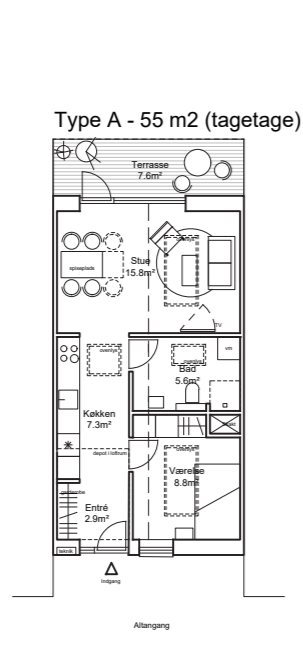
Type A	4 stk
Type B	3 stk
Type C	5 stk
Type D	5 stk
Type E	3 stk
I alt	20 boliger

BLOK 2

Type A	2 stk
Type B	3 stk
Type C	6 stk
Type D	5 stk
Type E	3 stk
I alt	20 boliger

BLOK 3

Type A	3 stk
Type B	3 stk
Type C	5 stk
Type D	6 stk
Type E	2 stk
I alt	18 boliger





VERSION 1 - SADDELTAG

















VERSION 2 - FLADT TAG













